

2020-2021 International Online Chinese Language Winter Program

Shanghai Ocean University



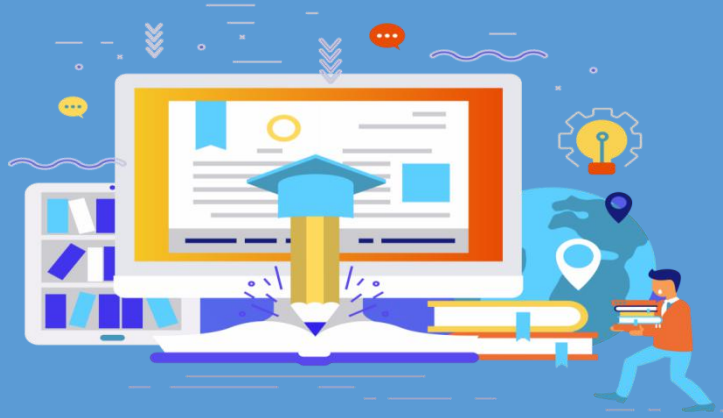
Why SHOU?

SHOU was founded in 1912. SHOU has developed to an applied research comprehensive university contains bachelor, master and doctoral degree programs with a specialty of marine, aquatic and food technology. SHOU is honored as a “Double First Class Discipline Building University”. SHOU has a vibrant and diversified community which consists of about 2,000 faculty members, over 12,000 undergraduate students, 3,600 graduate students.

SHOU international student education began in the 1950s. The university has trained nearly 3,000 international students from more than 80 countries and regions. It has signed cooperation agreements with over 100 universities, research institutes and International Organizations in 32 countries around the world, and accomplished to develop exchange students with many overseas universities.

Program Highlights

- **Learn Chinese Online**
- **Good Teaching Quality with Reasonable Price**
- **Excellent Faculty Practices and Exceptional Standards**



New Teaching Method

This course provides comprehensive language skill training. The students will be equipped with fundamental communication skill via lectures of basic Chinese vocabulary and grammar as well as comprehensive practices of listening, speaking, reading and writing. Our program adopts a Comprehensive teaching mode. This kind of mode focus on the functions, situations, grammars and structures of the language, and the combination of the four. In this mode, the course is very practical and effective, which can cultivate learner's Listening, Speaking, Reading and Writing skills in a short period of time. As the center of the learner, the teacher is the group leader to guide the students to learn. Conscious learning and unconscious natural learning are equally emphasized in this mode. This mode can also pay attention to the grammar rules and the inertia formed by imitation and practice.

Program Schedule



		DEC.28	DEC.29	DEC.30	DEC.31	JAN.01	Weekends
Week 1	AM	Registration Check-In	Chinese Language 8:15-11:40 (4 Class Hours)	Chinese Language 8:15-11:40 (4 Class Hours)	Chinese Language 8:15-11:40 (4 Class Hours)	New Year Day-off	
	PM	Online Opening Ceremony		Chinese Culture Lecture Series (1) 13:00-14:45 (2 Class Hours)			
		JAN.04	JAN.05	JAN.06	JAN.07	JAN.08	Weekends
Week 2	AM	Chinese Language 8:15-11:40 (4 Class Hours)	Chinese Language 8:15-11:40 (4 Class Hours)	Chinese Language 8:15-11:40 (4 Class Hours)	Chinese Language 8:15-11:40 (4 Class Hours)	Chinese Language 8:15-11:40 (4 Class Hours)	
	PM	Calligraphy 13:00-14:45 (2 Class Hours)		Chinese Language 13:00-16:20 (4 Class Hours)		Paper Cutting 13:00-14:45 (2 Class Hours)	
		JAN.11	JAN.12	JAN.13	JAN.14	JAN.15	Weekends
Week 3	AM	Chinese Language 8:15-11:40 (4 Class Hours)	Chinese Language 8:15-11:40 (4 Class Hours)	Chinese Language 8:15-11:40 (4 Class Hours)	Chinese Language 8:15-11:40 (4 Class Hours)	Chinese Language 8:15-11:40 (4 Class Hours)	
	PM	Chinese Painting 13:00-14:45 (2 Class Hours)		Chinese Language 13:00-16:20 (4 Class Hours)	Chinese Culture Lecture Series (2) 13:00-14:45 (2 Class Hours)	Completion Ceremony	

Teaching Arrangements



Class Mode: Live streaming courses delivered online.





Platform and software used in class: DingTalk, WeChat.



Courses: Comprehensive Chinese include Instructive class and Practice class. Instructive class is primary lecture-based class, including basic Chinese vocabulary and grammar learning.

Practice class is aimed at reviewing and practicing what already learned in Instructive class. Practical skills on listening, speaking, reading and writing comprehension will all be enhanced.

 **Assignment:** Teacher will arrange assignments every day. Preview and review are necessary for the learners. Group work is very common. At the end of the program, everyone needs to do a Presentation in Chinese and also take a written final exam.

 **Examination and Scoring:** The total score of examination is 100. A minimum of 60 is required to pass. For all the students who are teaching online, the final examination scores account for 40% and the general performance consists 60% of the total.

Program Fees

Program	Duration	Application Fee (RMB)	Tuition Fee (RMB)
International Online Chinese Language Winter Program	Dec.28 - Jan. 15 (3weeks)	200	1800

❖ Each program will need the enrollment of 10 students to be set up. If there are less than 10 students applied for a particular program, we will wait for the admission of more students to meet the required number before start the program.

❖ The fees will not be refunded after the program starts, except for the reason that the program cannot be set up.

Eligibility

- ❖ Non-Chinese citizen in good health.
- ❖ Between ages 16 to 50 at the time of application.
- ❖ Holding valid passport.



How to apply

- ❖ Complete the online application at admissions.shou.edu.cn to fill out personal information and upload required documents.
- ❖ Pay the application fee 200 RMB online.

Application Materials

1. Passport copy

- ❖ A clear copy of your valid passport with name, photo, date of birth, place of birth, date of issue, and date of expiry clearly visible. Visa page is required for applicants who are currently living outside their country of residence.

2. 1-Inch personal photo, electronic version JPG format.

Application Deadline

- ❖ Now to Dec. 22th, 2020



College of International Cultural Exchange Shanghai Ocean University

Address: 999 Hu Cheng Ring Road, Pudong New Area, Shanghai, China

Telephone: +86-21-6190-0763

Email: admissions@shou.edu.cn

Website: admissions.shou.edu.cn