



SHANGHAI JIAO TONG
UNIVERSITY



Application Guidance for
International Language Students



OVERVIEW

With a Long History

The non-degree Chinese language education at the Training Center of the school of Humanities has a history of more than 30 years.

Special Classes

Established special classes such as Chinese Heritage class (Huayi Ban) and Advanced Cultural and Business course, and also offers optional classes such as Chinese Calligraphy and Taiji.

Super High Teaching Quality

The school has more than 70 experienced teachers, most of whom have doctoral degrees or above or have rich experience in teaching Chinese as a foreign language.

Advanced Teaching Equipment

Chinese language teaching is conducted in small classes, and all classrooms are equipped with multimedia teaching equipment.

HSK Test Center

Since 2003, the university has set up HSK test center to provide a warm and attentive service to students.



1700 +
Language Students
Every year



70 +
Experienced
Teachers



From
70 +
Countries



PROGRAMS



Online Chinese Language Course

	Long-term Chinese Language Course (Full time)	Long-term Chinese Language Course (Part time)	Short-term Chinese Language Course
Semester	Spring: February—June Fall: September—January	Spring: February—June Fall: September—January	4 weeks: Early July—the end of July
Application Period	Spring: Sep. 15 th — Dec. 15 th Autumn: March 15 th — June 15 th	Spring: Sep. 15 th — Dec. 31 th Autumn: March 15 th — June 30 th	April 1— June 20
Study Period	Monday—Friday 16:00—19:30	Monday, Wednesday, Friday 18:30—20:00	Monday—Friday 16:00—18:30
Application Fee	RMB 450 (about \$85) – nonrefundable		
Tuition	RMB 9,900/semester (about \$1,650)	Business Chinese: RMB 8,100/semester (about \$1,350) Comprehensive Chinese: RMB 6,900/semester (about \$1,150)	RMB 3,000/semester (about \$500)



PROGRAMS

- **Long-term Chinese Language Course (Full time)**

General track:

1. Intensive Reading, Spoken Chinese, Listening, Reading, and Writing classes, for a total of 20 class hours per week.
2. The course is divided into 9 levels: Elementary 1, Elementary 2, Elementary 3, Elementary 4, Intermediate 1, Intermediate 2, Intermediate 3, Advanced 1 and Advanced 2.

Special class: Advanced Culture and Business Course

- **Long-term Chinese Language Course (Part time)**

Business Chinese

The program is designed for foreigners who has already worked in China and foreign students who hope to do business with Chinese in the future. The applicants shall pass New HSK Level 4 or have equivalent Chinese level.

Comprehensive Chinese (4 Levels)

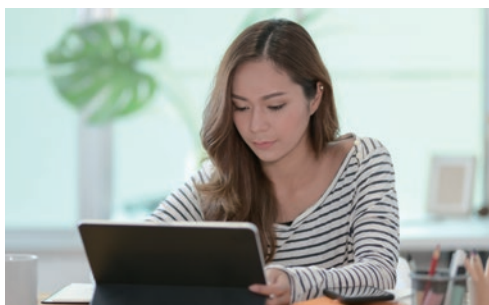
- **Short-term Chinese Language Course (summer)**

School time: July - August, Monday to Friday, 16:00-18:30

Application period: Mar.1 - May 31

Intensive Chinese 6 levels: A to F

Business Chinese 1 level



TIPS



● Entry Requirements

- (1) Aged between 18 to 55
- (2) In good health.

Online Application:

<http://apply.sjtu.edu.cn>

● Application Materials :

- (1) Passport copy
- (2) Recent photo
- (3) Study certificate, and attendance letter if you have studied I in China,

Method of Teaching: Online Broadcast

● Payment Method

- (1) Online payment
(Wechat pay/Alipay/Credit Card)
- (2) Bank remittance

Shanghai Jiao Tong University will provide completion certificate and transcript.

Students are required to attend classes every day and take the final exam. Electronic certificates and transcripts will be provided upon the completion of the courses.

A minimum number of **8 students** is required to start a class.

Contact us

Office address: International Training Center, School of Humanities, Shanghai Jiao Tong University (Room 105A, Lecture Building No.1, Xuhui Campus)

Phone Number: +86 21 62932277

Zip Code: 200030

E-MAIL: iso@sjtu.edu.cn

Website: www.sie.sjtu.edu.cn

